

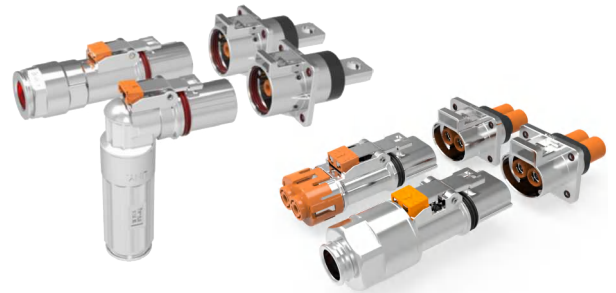
### V- Inline



#### Metal housing

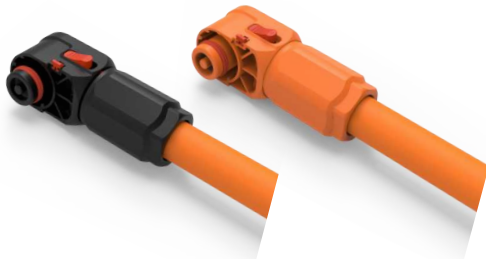
- 2 & 3 poles
- 80A & 300A

### V-Loc



- Metal housing
- Up to 600A

### V-Max



#### Energy Storage Connector

- Up to 600A
- Secondary locking

### V-Swap



#### Battery swap connector

- Hybrid Power & Signal
- Up to 10,000 mating cycles

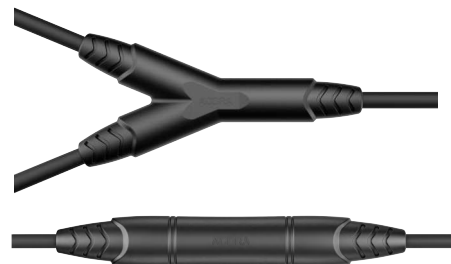
### V-Char



#### EV charging connector

- SAE J1772
- Tesla NACS AC & DC

### Sunlink G2



#### Over-molded PV inline fuses and harness

- 1500V DC rated
- 1A-80A inline fuses



### ADEHP

#### Metal housing

- Single pole
- 20-50mm<sup>2</sup> cable
- 120-180A



### ADEHV

#### Plastic housing

- 35-50mm<sup>2</sup> cable
- 2 & 3 poles
- 150-200A



### ADEHV

#### Metal housing

- 2 poles
- 35-50mm<sup>2</sup> cable
- 200A



### ADEHV

#### Plastic housing

- 2 poles
- 16-50mm<sup>2</sup> cable
- 200A



### ADEHV

#### Metal housing

- 2 & 3 poles
- 16-35mm<sup>2</sup> cable
- 150A



### ADECT

#### Metal housing

- 3 poles
- 2.5mm<sup>2</sup> cable
- 16A



### ADECT

#### Metal housing

- 2 poles
- 2.5-10.0mm<sup>2</sup> cable
- 16A-65A



### ADECT

#### Plastic housing

- 1&2&3 poles
- 25-70mm<sup>2</sup> cable
- 120A-250A



### ADFTD

#### Metal housing

- 35-70mm<sup>2</sup> cable
- 150A-300A



### ADFTC

#### Plastic housing

- 35-70mm<sup>2</sup> cable
- 150A-300A



### ADFTC

#### Metal terminal

- Straight or R/A
- 300A



### ADFTC

#### Metal terminal

- Straight or R/A
- 300A

